

Onomatopoeia

Onomatopoeia is when a word sounds like what it describes

Onomatopoeia is sometimes used in poetry

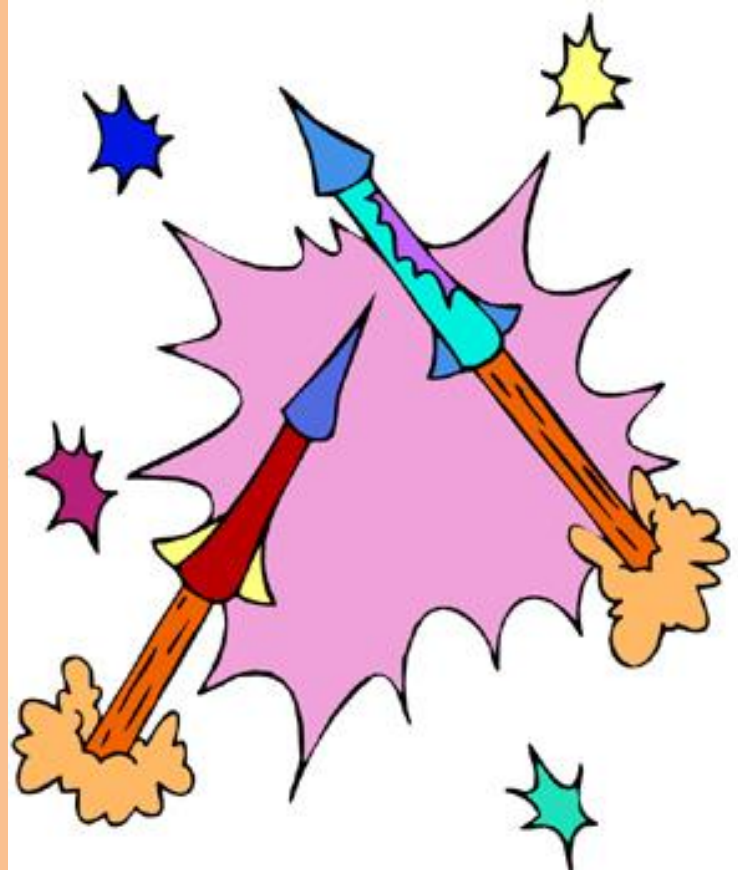
Listen to this song to see some examples:
<http://www.youtube.com/watch?v=f1b5kCvVBo8>

What sound can you hear?



Splash

What sound can you hear?



Whoosh

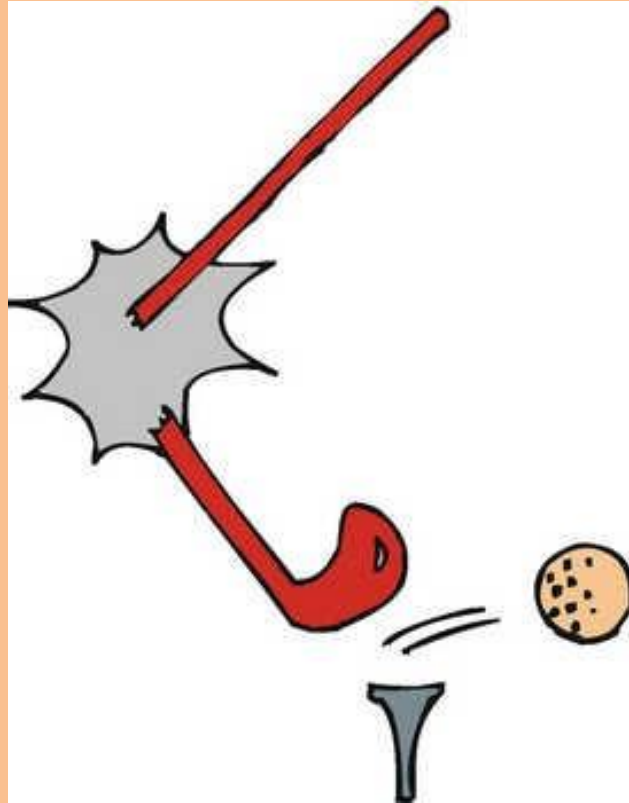
What sound can you hear?



Crash

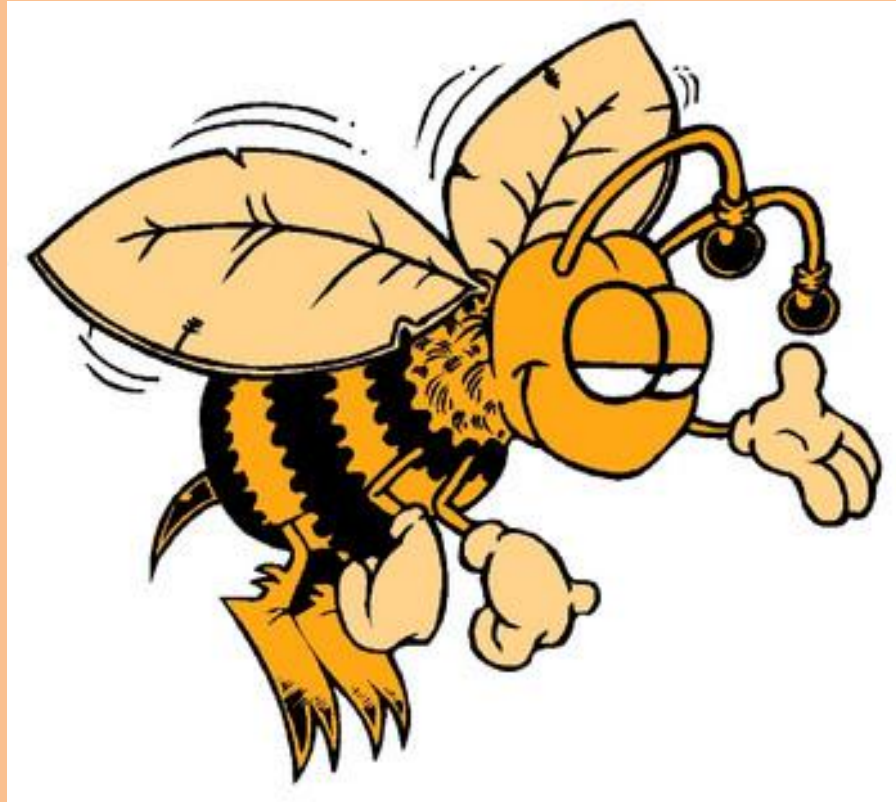
Smash

What sound can you hear?



Snap

What sound can you hear?



Buzz

What sound can you hear?



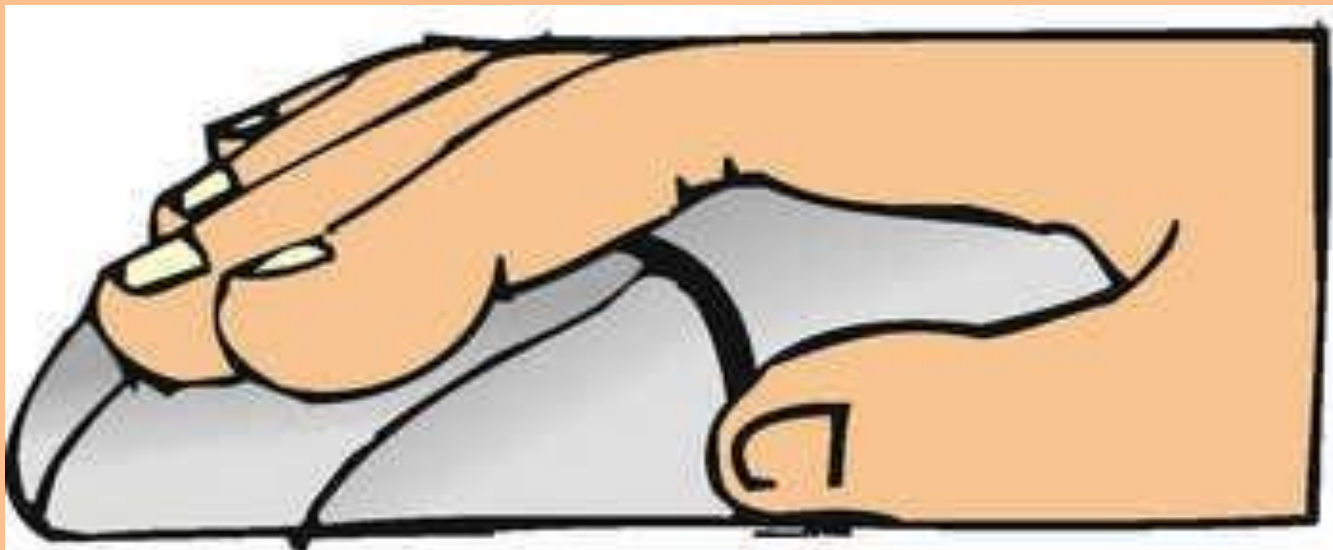
Hiss

What sound can you hear?



Sizzle

What sound can you hear?



Click

An onomatopoeic poem - The Break Down

Our poems are going to be about a car that breaks down.

What might each verse be about?

1st verse

The car breaks down

2nd verse

The owner gets angry when it won't start

3rd verse

The owner attacks and smashes the car

What onomatopoeic words could we use?

1st verse - The car breaks down

clunk

chug

bang

buzz

clang

creak

fizz

hiss

pop

rattle

2nd verse - The owner gets angry when it won't start

argh

bawl

beep

groan

moan

growl

grunt

honk

mutter

snarl

3rd verse - The owner attacks and smashes the car

bash

bang

boing

boom

clatter

ouch

slash

smack

snap

thump